

**TeMax**  
**GRAVEYARD**



**TeMax**  
**MULTI-LOADER**



**TeMax**  
**STABLE AND WINTER SERVICE**



**TeMax**  
**GARDEN LANDSCAPING**



**KNEILMANN**<sup>®</sup>  
TECHNICS FOR FIELD AND FARM

MADE IN GERMANY



**TeMax**<sup>T</sup>

**ELECTRIC TRANSPORTER  
WITH POWER**



**Kneilmann Gerätebau GmbH**  
Amelsbürener Str. 1  
59387 Ascheberg  
Germany  
T + 49 2593 95 20 95-0  
F + 49 2593 95 20 95-99  
info@kneilmann-geraetebau.de  
www.kneilmann-geraetebau.de

**T + 49 2593 95 20 95-0**

**TeMax**  
ENGLISH

WWW.TEMAX24.DE

**CONSULTATION. SALE. MAINTENANCE.**



TeMax

ELECTRIC TRANSPORTER WITH POWER



TeMax

The TeMax easily manoeuvres and safely transports loads of up to 350 kg. With its high-torque electric drive, it has extreme tractive power, masters slopes of up to 40%. Various attachments and equipment make the TeMax suitable for the most diverse needs – for gala construction and equestrian farms, for agriculture as well as for construction and demolition companies. It is also perfectly suited for operation in closed rooms.

PERFORMANCE ADVANTAGES

**Strong**  
Transports loads of up to 350 kg without problems, masters slopes of up to 40%.

**Versatile**  
Extensive range of attachments for flexible use all year round.

**Robust**  
High-quality and sturdy chassis construction; weather-resistant; durable lead-gel batteries; maintenance-free battery and drive technology.

**Suitable for long operation**  
Up to 8 hours continuous operation possible with 50 Ah batteries, up to 15 hours with 75 Ah batteries.

**Easily manoeuvrable**  
Extremely slim construction, compact dimensions for narrow paths and doors, small turning circle.



**Environmentally friendly**  
Energy saving, no exhaust gases and noise emission.

**Safe**  
High stability transport; continuously adjustable speed; smooth starting; maximum safety even on slopes.

**Cost-effective**  
Low operating costs (approx. 0.15 EUR per day of operation); no maintenance costs; „One for all“, thereby reducing high fleet costs; cost- and time-efficient working due to high loading volume.

**Ergonomic**  
Its musculature and back protecting properties contribute to maintaining the health of the user. Individually height adjustable steering area adjustment. Speed can be adjusted continuously with one finger.

**Not complicated**  
Very easy operation, simple handling, low-maintenance.

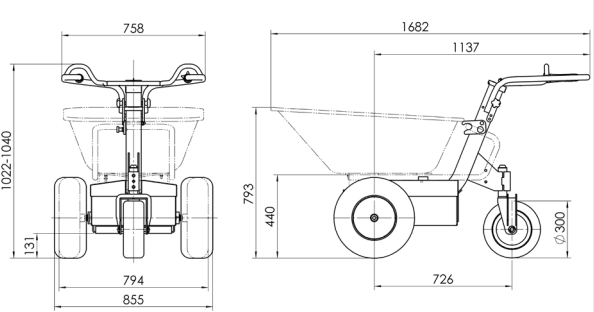
TeMax

ELECTRIC TRANSPORTER WITH POWER

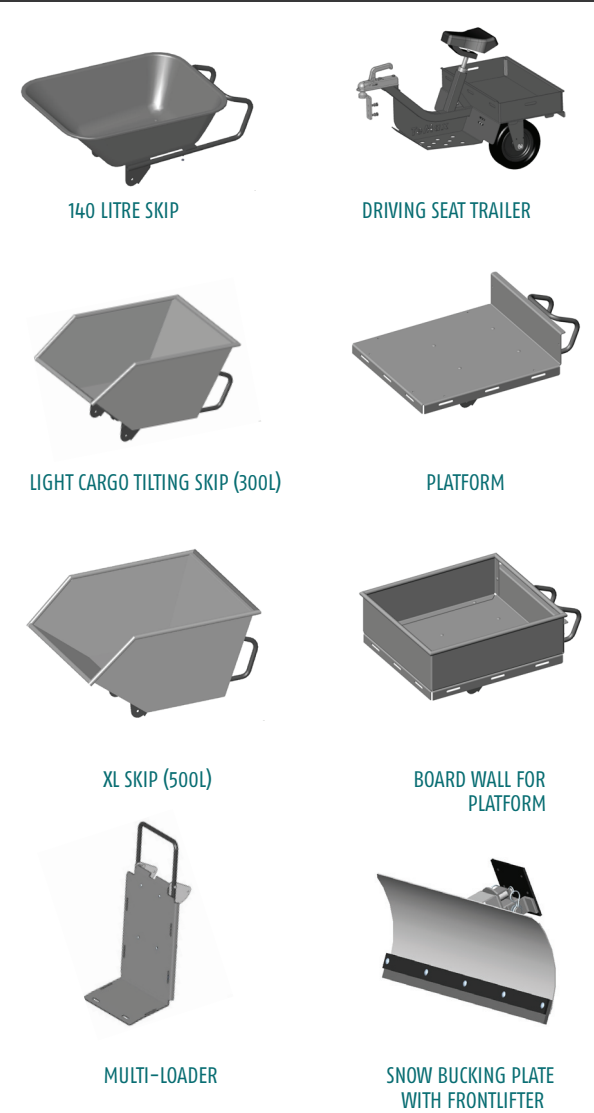


TECHNICAL DATA

Motor	24 V DC motor (1250 W) with differential gear
Driving speed (continuously)	6 km/h forward 3 km/h backwards
Vehicle load capacity	max. 350 kg
Climbing power/lateral inclination	max. 40 %
Dead weight (without skip) each depending on equipment	between 101 kg and 128 kg
Batteries	2 lead-gel batteries 12 V choice of: 50 Ah or 75 Ah rechargeable, interconnected to 24 V
Protection class/ operating temperature	IP 54 / -10°C to + 40°C
Charger 230 V / 24 V	choice of: 4 A (at 50 Ah) or 8 A (at 75 Ah)
Energy consumption	< 1 kWh for one battery charge (approx. 15 h continuous operation) < 0.5 Wh during trickle charging < 0.2 Wh in stand-by operation
Tyres	choice of: 4.80/4.00-8 grass tyres or 4.00-8 field lug tyres or 16 x 6.50-8 wide field lug tyres



ACCESSORIES



MADE IN GERMANY